

History of the Metal Industry Committee

A. MALCOLM CURRY, LIFE FELLOW, IEEE

THE Metal Industry Committee stems from an AIEE committee on Applications to Iron and Steel Industry which was first organized in 1914. This early committee was active until around 1937. In a reorganization in 1947, the Mining and Metal Industry Committee was formed, and this became a part of the AIEE Industry Group in 1948. In 1958 the Mining and Metal Industry Committee was divided into the Metal Industry Committee and the Mining Industry Committee. The Metal Industry Committee unit was assigned to the AIEE Industry Division. In 1964, and following the 1963 AIEE-IRE merger, the Industry Division became the Industry and General Applications Group. This group later became the Industry Applications Society.

The scope of the present day Metal Industry Committee covers the making, shaping, and treating of all metals. The present committee membership reflects the wide range of interest of users and equipment suppliers to the various metal industries. There still remains, however, a strong influence by the iron and steel industry which is evidenced by the informal cooperative relationship that has been established and maintained for a number of years between the committee and electrical engineers from within the Association of Iron and Steel Engineers. The specific committee activities and accomplishments in recent years include the following:

- 1) organized and conducted technical sessions at the IAS Annual Meetings;
- 2) appointed and furnished technical support to the IEEE representative on Code Making Panel 12 of the National Electric Code;
- 3) reviewed and endorsed IEEE technical standards;
- 4) appointed liaison representation to many other IAS groups.

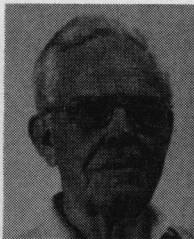
It is interesting that in the Fiftieth Anniversary edition of *Electrical Engineering* that Elihu Thomson, President of AIEE in 1889-1890, reports seeing a Wilde machine demonstrated in Philadelphia by Prof. Robert E. Rogers of the Department

of Physics of the University of Pennsylvania heating a strip of metal to a bright red heat when driven by the power of two men. This may well have been the embryo birth of the committee founded in 1914. This demonstration predates the founding of AIEE in 1884.

In the Fiftieth anniversary issue of *Electrical Engineering*, the Committee Chairman of the Committee on (electrical) Applications to Iron and Steel production were listed as follows:

J. C. Reed, Steelton, PA	1914-1915
T. E. Tynes, Buffalo, NY	1915-1916
Wilfred Sykes, East Liberty, PA	1916-1917
F. D. Egan, Midland, PA	1917-1918
Eugene Friedlander, Braddock, PA	1918-1919
W. F. James, Philadelphia, PA	1919-1921
E. S. Jefferies, Hamilton, ON, Can.	1921-1923
F. B. Crosby, Worcester, MA	1923-1926
A. G. Pierce, Cleveland, OH	1926-1928
M. M. Fowler, Chicago, IL	1928-1930
A. C. Cummings, Duquesne, PA	1930-1932
F. O. Schnure, Sparrows Point, MD	1932-1934

In the ensuing 49 years, Mr. Curry was unable to fill the gap. The chairman for 1983-1984 was D. C. Morton, Chester-ton, IN.



A. Malcolm Curry (M'42-SM'57-F'77-LF'81) retired from the Aluminum Company of America where he was an Electrical Engineer about five years ago. During his time with ALCOA, he was very active with various IAS committees, one of which was the Metals Industry Committee.